



B&H INDUSTRIAL & BUSINESS PROPERTIES





Trade and business facility Bijeljina

Location	Bijeljina
Location description	ATC Bijeljina is located near roundabout routes Bijeljina-Beograd
Project description	Building land, building permit with all necessary documentation...
Project status	Sale of the above-mentioned locatin with all accompanying documentation...
Ownership	Private property
Inputs provided by local partner	750 000 EUR
Inputs required from foreign partner	By appointment





Business zone Biletići- Blizanci, Čitluk

Location	Čitluk
Workshop surface	180.000 m ²
Project description	Business zone Biletići -Blizanci is industrial zones in the rural area of the municipality of Čitluk. Business zone is defined by spatial and urban planning documents and is recorded in land registry and the land is divided up into 44 parcels.
Access to main road	Yes, Biletići-Blizanci Business Zone is situated 25km from the airport, 50 km from the sea and is connected with main roads.
Infrastructure	Yes, Infrastructural works on the access roads in the area are completed; Electricity, telephone, water and gas is ensured.
Ownership	Municipality of Čitluk
Inputs required from foreign partner	Selling,6-8 KM per m ²



Business zone Blizne Gomile, Čitluk

Location	Čitluk
Workshop surface	80.000 m ²
Project description	Business zone Blizne Gomile is industrial zones in the rural area of the municipality of Čitluk. Business zone is defined by spatial and urban planning documents and is recorded in land registry. In the business zone there are also the following supplementary facilities; restaurant, parking. The land is divided up into 16 parcels.
Access to main road	Yes, Blizne Gomile Business Zone is situated 25km from the airport, 53 km from the sea and is connected with main roads.
Infrastructure	Yes, Infrastructural works on the access roads in the area are completed; Electricity is ensured, Three-phase electric power. Each parcel has a timer, installed water mains and sewage system.
Ownership	Municipality of Čitluk
Inputs required from foreign partner	Selling, 4-16 KM per m ²



Business zone "Mostarska"

Location	Ljubuški
Workshop surface	840.000 m ²
Project description	Business zone" Mostarska vrata "is industrial zones in the urban area of the municipality of Ljubuški. Business zone is defined by spatial and urban planning documents and is recorded in land registry and the land is divided up into 86 parcels.
Access to main road	Yes, Business Zone "Mostarska vrata" have a favorable geographical position. Business Zone is situated 35km from the airport, 35km from the sea and is connected with main roads.
Infrastructure	Yes, Infrastructural works on the access roads in the area are completed.
Ownership	Municipality of Ljubuški
Inputs required from foreign partner	Selling, 3-6 € per m ²

Business zone "Soko" ,Ljubinje

Location	Ljubinje
Workshop surface	161.000 m ²
Project description	Business zone "Soko" is industrial zone in the urban area of the municipality of Ljubinje. Business zone is defined by spatial and urban planning documents and is recorded in land registry.
Access to main road	Yes, Business Zone "Soko" have a favorable geographical position, because it is located near the future European Corridor Vc and Adriatic-Ionian Road direction .Business Zone "Soko" is also located near the international border crossings with the Republic of Croatia and Montenegro .55 km away from the railway, 75 km from the sea port and 55km from the airport
Infrastructure	According to information received from representatives of Ljubinje infrastructure necessary for companies in the business zone exists, there was once the factory tires , panels, lumber mills, textile factories ... In the business zone "Soko" was installed three-phase electricity and water supply and has been resolved.
Ownership	Municipality of Ljubinje
Inputs required from foreign partner	Selling,



Business zone Šipad, Konjic

Location	Konjic
Workshop surface	200.000 m ²
Project description	Business zone Šipad is industrial wood processing zones in the urban area of the municipality of Konjic. Business zone is provided by spatial and urban planning and is recorded in land registry and fragmented. In the business zone there are also the following supplementary facilities; sewage collector, fire service, insurance services and electrical networks.
Access to main road	Yes, Šipad Business Zone is situated 60km from the airport and is connected with main roads.
Infrastructure	Yes, Infrastructural works on the access roads in the area are completed; Electricity is ensured, manpower to 5 MW. Each parcel has a timer, installed water mains and sewage system.
Ownership	Municipality of Konjic
Inputs required from foreign partner	Selling, 10-15KM per m ²

Business zone Tromeđa, Čitluk

Location	Čitluk
Workshop surface	4000.000 m ²
Project description	Business zone Tromeđa is industrial zones in the urban area of the municipality of Čitluk. Business zone is defined by spatial and urban planning documents and is recorded in land registry. In the business zone there are also the following supplementary facilities; restaurant, parking. The land is divided up into 75 parcels.
Access to main road	Yes, Tromeđa Business Zone is situated 35km from the airport, 45 km from the sea and is connected with main roads.
Infrastructure	Yes, Infrastructural works on the access roads in the area are completed; Electricity is ensured, Three-phase electric power. Each parcel has a timer.
Ownership	Municipality of Čitluk
Inputs required from foreign partner	Selling, 17-35KM per m ²



Business zone Unis, Konjic

Location	Konjic
Workshop surface	200.000 m ²
Project description	Business zone Unis is industrial metal processing zones in the urban area of the municipality of Konjic. Business zone is provided by spatial and urban planning and is recorded in land registry and fragmented. In the business zone there are also the following supplementary facilities; sewage collector, fire service, insurance services and electrical networks.
Access to main road	Yes, Unis Business Zone is situated 60km from the airport and is connected with main roads.
Infrastructure	Yes, Infrastructural works on the access roads in the area are completed; Electricity is ensured, manpower to 5 MW. Each parcel has a timer, installed water mains and sewage system.
Ownership	Municipality of Konjic
Inputs required from foreign partner	Selling, 10-15KM per m ²



Business zone "Zvirići" ,Ljubuški

Location	Ljubuški
Workshop surface	150.000 m ²
Project description	Business zone "Zvirići" is industrial zones in the urban area of the municipality of Ljubuški. Business zone is defined by spatial and urban planning documents and is recorded in land registry and the land is divided up into 30 parcels.
Access to main road	Yes, Business Zone "Zvirići" have a favorable geographical position, because it is located near the future European Corridor Vc (north-south) and Adriatic-Ionian Road direction (west-east). Business Zone "Zvirići" is also located near the international border crossings with the Republic of Croatia: the border crossing "Bijača" is under construction and crossing the "Crveni Grm".
Infrastructure	According to information received from representatives of Ljubuški municipality infrastructure needed for businesses in the Business zone does not currently exist (except gas stations), but there are necessary prerequisites to future infrastructure in the business zone "Zvirići" connected to water mains that are located near the zone, such as the connection to the power, water and telecommunications network.
Ownership	Municipality of Ljubuški
Inputs required from foreign partner	Selling,6 € per m ²



“Municipality of Berkovići”

Project title	Building quicklime plants
Sector	Infrastructure Sector
Location	Territory of the municipality Berkovići,RS
Location description	Predolje,Berkovići
Company description	Local authority
Project description	The project envisages the construction quicklime plants on the location Predolje.The realization of the project would enable the opening of 20 work-places and growth of entrepreneurship. The market for lime would be a region and area of Montenegro.
Estimated total investment cost	2.000.000 KM
Type of financial investment	Greenfield



“Municipality of Berkovići”

Project title	Building Stone Exploitation-Brštanik
Sector	Infrastructure Sector
Location	Territory of the municipality Berkovići,RS
Location description	Brštanik,Berkovići
Company description	Local authority
Project description	The project predicts the opening of facilities for the exploitation of building stone on the site Brštanik. The market for building stone exists in the region and beyond. There have already made the preparation of land, obtained the necessary documentation, purchased machinery, and brought the path to the quarry.
Estimated total investment cost	1.300.000 KM
Type of financial investment	Brownfield



“Municipality of Berkovići”

Project title	Building Stone Exploitation-Orlovača
Sector	Infrastructure Sector
Location	Territory of the municipality Berkovići,RS
Location description	Orlovača,Berkovići
Company description	Local authority
Project description	The project predicts the opening of facilities for the exploitation of building stone on the site Orlovača. The market for building stone exists in the region and beyond. Available resources: raw materials and secured market Project status: prepared feasibility study
Estimated total investment cost	2.000.000 KM
Type of financial investment	Greenfield

“Municipality of Berkovići”

Project title	Construction of clay exploitation facility in the area of Kalina
Sector	Infrastructure Sector
Location	Territory of the municipality Berkovići,RS
Location description	Kalina,Berkovići
Company description	Local authority
Project description	The realization of the project envisages two phases, where the first phase of the study and drafting of project documentation, and in the second stage of the process of finding investors for the construction of the facility that drives exploitation of clay for the immediate location Kaline. Study who had previously made showed that in this area exist large stocks quality clay brick that would soon found its market in the region. This project would allow creation of new jobs in the municipality Berkovići.
Estimated total investment cost	2.000.000 KM
Type of financial investment	Greenfield



“Municipality of Berkovići”

Project title	Building Stone Exploitation-Brštanik
Sector	Infrastructure Sector
Location	Territory of the municipality Berkovići,RS
Location description	Brštanik,Berkovići
Company description	Local authority
Project description	The project predicts the opening of facilities for the exploitation of building stone on the site Brštanik. The market for building stone exists in the region and beyond. There have already made the preparation of land, obtained the necessary documentation, purchased machinery, and brought the path to the quarry.
Estimated total investment cost	1.300.000 KM
Type of financial investment	Brownfield



“Municipality of Berkovići”

Project title	Building Stone Exploitation-Orlovača
Sector	Infrastructure Sector
Location	Territory of the municipality Berkovići,RS
Location description	Orlovača,Berkovići
Company description	Local authority
Project description	The project predicts the opening of facilities for the exploitation of building stone on the site Orlovača. The market for building stone exists in the region and beyond.
Estimated total investment cost	Available resources: raw materials and secured market
Type of financial investment	Project status: prepared feasibility study
	2.000.000 KM
	Greenfield



Regional sanitary landfill “Stara pruga – Kurevo” near Prijedor

Project title	Construction of plant for selective solid waste collection
Sector	Infrastructure Sector
Location	Regional sanitary landfill „Stara pruga – Kurevo“ near Prijedor
Location description	Landfill site is located about 8 km southwest from the city of Prijedor, near regional road Prijedor- Ljubija. Landfill is connected to the regional road via access road app. 800 m length. On landfill site exist complete infrastructure (water, electricity, sewage network)
Company description	Public utility – joint stock company
Project description	Collected municipal waste from municipalities of Prijedor region would be sorted and separated to be useful components for the recycler (paper, nylon, PET, cardboard, plastic materials, metal) to minimize the amount of waste deposited, extended landfill life, increased economic profits companies and hired new workers. Project realisation will increase level of the environmental protection in wider landfill area. For project realisation is predicted construction of the hall dimension cca 100 x 20 m with installed equipment for solid waste assortment : box lifter, elevators, transport – sorting, conveyor belts, drum for small waste separating ,bins for the disposal of usable materials, press for the baling of waste, etc.
Estimated total investment cost	1.800.000 KM
Type of financial investment	Joint investment



“Municipality of Berkovići”

Project title	Construction of boiler on timber biomass, power of 20MW
Sector	Infrastructure Sector
Location	Industrial zone Celpak , Prijedor
Location description	Location prediction for construction of new plant is located near to present heating plant and presentate a part of land located in industrial zone Celpak which is in ownership of municipaliti Prijedor . Available area of land is slightly more than 9000 m2 .
Project status	Project is in stage of development pre-investment studies
Project description	Project is anticipated, construction of boiler on timber biomass, power of 20MW with necessary infrastructure, equipment and pipe hot water network necessary for connection of new plant to the existing heat distribution system
Estimated total investment cost	7 000 000 EUR
Type of financial investment	Joint investment



Project Title	CONSTRUCTION OF CLAY EXPLOITATION FACILITY IN THE AREA OF KALINA
Location	Territory of the municipality Berkovići,RS
Location Description	Kalina,Berkovići
Project Description	The realization of the project envisages two phases, where the first phase of the study and drafting of project documentation, and in the second stage of the process of finding investors for the construction of the facility that drives exploitation of clay for the immediate location Kaline. Study who had previously made showed that in this area exist large stocks quality clay brick that would soon found its market in the region. This project would allow creation of new jobs in the municipality Berkovići.
Type of financial investment	Greenfield
Estimated Total Investment Cost	2.000.000 KM



Project Title	BUILDING QUICKLIME PLANTS
Location	Territory of the municipality Berkovići,RS
Location Description	Predolje,Berkovići
Company description	Local authority
Project Description	The project envisages the construction quicklime plants on the location Predolje.The realization of the project would enable the opening of 20 workplaces and growth of entrepreneurship. The market for lime would be a region and area of Montenegro.
Estimated Total Investment Cost	2.000.000 KM



Project Title	TECHNOLOGY BUSINESS PARK
Location	Ramići, Banja Luka, Republic of Srpska, Bosnia and Herzegovina
Location Description	Banja Luka is the second largest city in Bosnia and Herzegovina and located in the north-western part of the country. Technology business park is located in the northwestern area of Banja Luka next to the highway Banja Luka – Prijedor. The subject is located in Ramići, 10 km away from downtown area. Total surface area is 219 ha, of which 29 ha of constructed facilities.
Project Status	Feasibility study for TBP – 2010. Environment impact assessment Regulation plan – in progress Ownership transfer to the City of Banja Luka – in progress
Project Description	TBP is a modern form of space organization, infrastructure decorated, combining technological, economic and environmentally progressive industries, business, applied science and operators with a mix of economic activities and quality environmental and esthetic ambience of the northwestern part of Banja Luka, in a single economic unit with the function of scientific development of the city area. An integral part of the TBP: Investors Center, Technology and development center, Incubator network, Zone management Center, Information and education center, Techno Ram, Commercial department. Establishment and functioning plan of TBP provides four stages in the dynamics of the project life of 25 years.
Estimated Total Investment Cost	40.000.000 EUR



Project Title	GREEN POWER PLANT
Location	Ramići, Banja Luka, Republic of Srpska, Bosnia and Herzegovina
Location Description	Banja Luka is the second largest city in Bosnia and Herzegovina and is located in the north-western part of the country. Green power plant as a part of the Technology business park is located next to the Banja Luka- Prijedor highway. The subject is located in Ramići, 10 km away from the downtown area.
Project Status	The construction study of "Green power plant" for Technological Business Park purpose, Banja Luka, 2011.
Project Description	The Green Power plant project for the purpose of Technology business park resulted from a number of favourable aspects related to subject site. One of the most important aspects is the vicinity of regional dumpsite in Ramići and existence of manufacturing hall with a total roof surface of 30,000 m ² . The project foresees the installation of a biomass cogeneration plants, as well as installation of a solar power plant on the hall roof with a total installed capacity of 1MW.
Estimated Total Investment Cost	Photovoltaic power plant: - 3.000.000,00 EUR Bio – mass fuelled plants: Phase I – 2.500.000,00 EUR Phase II – 2.600.000,00 EUR



Project Title	BANJA LUKA EXIBITION CENTRE CONSTRUCTION PROJECT
Location	Zaluzani, Banja Luka, Republic of Srpska, Bosnia and Herzegovina
Location Description	The project of a modern exhibition centre with accompanying facilities will be located on a part of the Zaluzani military barracks. The complex of military barracks "Krajiških Brigade" is located between two municipalities, Banja Luka and Laktasi, 11 km away from the Banja Luka downtown, 10 km away from Laktasi downtown, within the local communities Zaluzani – Kuljani andThe total coverage of this area is approximately 30,000 m2.
Project Status	Preliminary design and Spatial plan – in progress
Project Description	Exhibition scope is the construction of a numeroushalls planned for the products presentation. In addition to existing demands for high quality exhibition space, during construction it is necessary to plan the possibility of expanding capacity in the future. The project realization includes the building of exhibition halls, a square with the suficient surface outdoor exposure, as well as the administrative center, congress and conferention halls, and other supporting facilities for exhibition centers. Also, it is necessary to provide the whole infrastructure, and enough parking space for visitors and other users, close to the center.
Estimated Total Investment Cost	40.000.000 KM



Project Title	STADIUM
Location	Banja Luka, Republika Srpska, BiH
Location Description	Banja Luka is the second largest city in Bosnia and Herzegovina and located in the north-western part of the country. Planned project is located in the city center and occupies a total land area of 172 452 m ² (17.25 hectares).
Project Status	Preliminary design - done Pre-study: Economic validity of City stadium project in Banja Luka by private public partnership model - done
Project Description	Football stadium project involves the construction of the object that provides maintenance of sport and cultural events. This object was planned according to the highest standards for maintenance of international football matches, other outdoor events, and cultural events like concerts. This location is divided into three subunits: A- Football stadium B- Sports and recreation zone C-Tennis center area The stadium is a part of sports and recreation complex, which occupies a total land area of 172 452 m ² (17.25 hectares) The quarter of the stadium is western part of the complex, placed along the Boulevard Srpske vojske on the land surfaces of 79 890 m ² Sports and recreational areas (additional field, additional field with running track and field) is located in the central zone of the complex on a plot of 64 466 m ² Tennis Center is located in the southern zone of the Complex plot of 28 096 m ²
Estimated Total Investment Cost	50.000.000 EUR



Project Title	RECONSTRUCTION AND REMODELATION OF THE KASTEL FORTRESS IN BANJA LUKA
Location	Kastel fortress in Banja Luka
Location Description	Kastel fortress represent historical centre of City of Banjaluka. Placed in City centre near river Vrbas and Crkena.
Project Status	Technical documentation for reconstruction and revitalisation of the Kastel fortress - done Documentation defined by Low of Spatial Planning and Building - done Preparation of tender documentation for construction works for Reconstruction and Remodelation of Spatial Ensemble 9 – East Courtyard - in progress
Project Description	Strategic decision in culture in City of Banjaluka is providing spaces for new cultural contents at new location as the location of the fortress Kastel through reconstruction of existing structure. There are planned reconstruction and rehabilitation of the all spaces of the fortress as adaptation of existing spaces for new purpose.
Project Objectives	Reconstructed and revitalised Kastel fortress
Estimated Total Investment Cost	25.600.000,00 €



Project Title	LOGISTICS AND DISTRIBUTION CENTER
Location	Ramići, Banja Luka, Republic of Srpska, Bosnia and Herzegovina
Location Description	Banja Luka is the second largest city in Bosnia and Herzegovina and is located in the north-western part of the country. LDC as a part of the Technology business park is located next to the Banja Luka-Prijedor highway. This subject is located in Ramići, 10 km away from downtown area.
Project Status	Feasibility study - done The conceptual design - done
Project Description	Strategic decision in culture in City of Banjaluka is providing spaces for new cultural contents at new location as the location of the fortress Kastel through reconstruction of existing structure. There are planned reconstruction and rehabilitation of the all spaces of the fortress as adaptation of existing spaces for new purpose.
Project Objectives	Logistics and distribution center – represents regulated and organized space and its use is for acceptance, preparation, reloading and shipping of goods. LDC contents: Goods terminal; Loading and unloading equipment; Storage area; Area for processing, assembling or another added value; Freight forwarding; Customs; Veterinarian, sanitary and phytosanitary inspections; Parking space; Road junction (roads and railway tracks).
Estimated Total Investment Cost	



Revitalization of a Plant for Industrial Manufacturing of Metal Products and Technical Rubber Products	
Location	Municipality of Ljubinje - Former industrial zone Soko
Location description	Good geographic position, good transport connections, soon will pass through the Corridor Vc and the Adriatic – Ionian Motorway at 20-30 km from Ljubinje, complete utility infrastructure , proximity of borders of Croatia and Montenegro.
Company description	Local authority
Access to main road	Yes, Business Zone "Mostarska vrata" have a favorable geographical position. Business Zone is situated 35km from the airport, 35km from the sea and is connected with main roads.
Project description	Investment in the existing companies SOKO-FTS and Soko-Guma. Qualified labor, present tradition (production of spare parts for the factory Zastava Kragujevac)
Estimated total investment cost	500,000 BAM
Type of other cooperation sought from foreign sources	Brownfield

Business zone Misurići	
Location	Maglaj , BiH
Location description	located on the main road M17, on river Bosna in Central BiH.
Company description	Municipality Maglaj, was founded in the 15-th century, Area 288 km ² , 27.000 Inhabitans
Access to main road	Yes, Business Zone "Mostarska vrata" have a favorable geographical position. Business Zone is situated 35km from the airport, 35km from the sea and is connected with main roads.
Estimated total investment cost	1.000.000,0 – 5.000.000,0 KM step by step
Type of financial investment	All agreed between partners - lease or sale of business complex



Aqua park with Sports center and Business complex	
Location	Maglaj , BiH - located on the main road M17, on river Bosna in Central BiH.
Location description	City center – Area 7000 m2
Company description	Municipality Maglaj, was founded in the 15-th century, Area 288 km2, 27.000 Population
Estimated total investment cost	5.000.000,0 KM
Type of financial investment	Private



BUSINESS ZONE" MOSTARSKA VRATA", LJUBUŠKI	
Location	Ljubuški
Workshop surface	840.000 m ²
Project description	Business zone" Mostarska vrata "is industrial zones in the urban area of the municipality of Ljubuški. Business zone is defined by spatial and urban planning documents and is recorded in land registry and the land is divided up into 86 parcels.
Access to main road	Yes, Business Zone "Mostarska vrata" have a favorable geographical position. Business Zone is situated 35km from the airport, 35km from the sea and is connected with main roads.
Infrastructure	Yes, Infrastructural works on the access roads in the area are completed.
Ownership	Municipality of Ljubuški
Inputs required from foreign partner	Selling, 3-6 € per m ²



BUSINESS ZONE" ZVIRIĆI" ,LJUBUŠKI	
Location	Ljubuški
Workshop surface	150.000 m ²
Project description	Business zone "Zvirici" is industrial zones in the urban area of the municipality of Ljubuški. Business zone is defined by spatial and urban planning documents and is recorded in land registry and the land is divided up into 30 parcels.
Access to main road	Yes, Business Zone "Zvirici" have a favorable geographical position, because it is located near the future European Corridor Vc (north-south) and Adriatic-Ionian Road direction (west-east). Business Zone "Zvirici" is also located near the international border crossings with the Republic of Croatia: the border crossing "Bijača" is under construction and crossing the "Crveni Grm".
Infrastructure	According to information received from representatives of Ljubuški municipality infrastructure needed for businesses in the Business zone does not currently exist (except gas stations), but there are necessary prerequisites to future infrastructure in the business zone "Zvirici" connected to water mains that are located near the zone, such as the connection to the power, water and telecommunications network.
Ownership	Municipality of Ljubuški
Inputs required from foreign partner	Selling,6 € per m ²




MUNICIPALITY ŽEPČE – INDUSTRIAL ZONE „POLJA“	
Project title	Investing in industrial zone „Polja“ Žepče, Municipality Žepče
Sector	Investors from sectors: textile industry, IT industry, food industry, light metal industry – emphasis on clean and “quiet” industries
Location	Municipality Žepče, Zenica – Dobož canton, region Central Bosnia
Location description	Industrial zone “Polja” Žepče is located in the Central Bosnia region and Zenica-Dobož Canton, on the most important route connecting Eastern Europe with Adriatic Sea (beside motorway M-17, regional road R-465 Žepče- Zavidovići and railroad Ploče – Sarajevo- Šamac - Budapest). “Polja” Žepče is located at the entrance to the town Žepče, 5 minutes away from administration centre, banks and other relevant institutions.
Project description	Industrial zone „Polja“Žepče covers 11,2 ha of total surface, with total of number of 5 plots: 40.374m ² ; 21.383 m ² , 19.970 m ² ,13.256 m ² , 12.186 m ² . There is possibility of adjusting size of parcels to the needs of investor. The Industrial zone is open with four plots for foreign investors. Plot 1 - 40.374m ² has been sold to the company CarTrim Gmbh from Germany.
Estimated total investment cost	The amount of invested financial resources to IZ „Polja“ by Municipality Žepče is : 531.414,72 BAM/ 272.520,00 EUR
Type of financial investment	Type of financial investment Foreign investors, in clean and „silent“ industries from: TEXTILE INDUSTRY, IT INDUSTRY, FOOD INDUSTRY, LIGHT METAL INDUSTRY Investment in the area of public – private partnership



REVITALIZATION EXPANSION AND PROMOTION OF INDUSTRIAL BUSINESS ZONE IN DERVENTA	
Location	Ulica KNINSKA, DERVENTA (nex to main roads Banja Luka-Brod and Banja Luka-Doboj)
Location Description	INDUSTRIAL ZONE- 6. , IN TOTAL 20 HEKTARES
Project Status	PROVIDED BY REGULATION PLAN
Project Description	PROJECT RELATING TO THE SALE OF BUILDING LAND IN THE INDUSTRIAL ZONE IN DERVENTA
Project Background	
Project Objectives	SALE OF LAND FOR BUILDING INDUSTRIAL OBJECTS
Estimated Total Investment Cost	BY APPOINTMENT



INDUSTRIAL PLANTS - GRADISKA	
Location	Gradiška, Republic of Srpska, BH
Land surface	5900 m ²
Location Description	Property is located in immediate vicinity of country border crossing with Croatia (EU) and Customs Terminal – only 150 m
Project Status	Business property for sale or rental
Project Description	Industrial property for sale (3 production plants and a warehouse, with offices and other rooms, 5900 sqm), formerly used in apparel industry, located on 10.057 sqm of construction land and a parking lot 1600 sqm, close to border crossing with Croatia. Private property, with no legal burden, all valid documentation and pictures available upon request (land book documentation, other proofs of ownership and Certificate of occupancy etc.) This property can be used for any industrial activity (production, warehouse etc.)
TOTAL INVESTMENT (Phase 1)	Negotiable
Ownership	Private
	

BUSINESS ZONE BILETIĆI - BLIZANCI, ČITLUK

Location	Čitluk
Workshop surface	180.000 m ²
Project description	Business zone Biletići -Blizanci is industrial zones in the rural area of the municipality of Čitluk. Business zone is defined by spatial and urban planning documents and is recorded in land registry and the land is divided up into
44 parcels.	Yes
Access to main road	Yes, Biletići-Blizanci Business Zone is situated 25km from the airport, 50 km from the sea and is connected with main roads.
Infrastructure	Yes, Infrastructural works on the access roads in the area are completed; Electricity, telephone, water and gas is ensured.
Ownership	Municipality of Čitluk
Inputs required from foreign partner	Selling, 6-8 per m ²




**BUSINESS ZONE BLIZNE GOMILE, ČITLUK**

Location	Čitluk
Workshop surface	80.000 m ²
Project description	Business zone Blizne Gomile is industrial zones in the rural area of the municipality of Čitluk. Business zone is defined by spatial and urban planning documents and is recorded in land registry. In the business zone there are also the following supplementary facilities; restaurant, parking...
Access to main road	Yes, Blizne Gomile Business Zone is situated 25km from the airport, 53 km from the sea and is connected with main roads.
Infrastructure	Yes, Infrastructural works on the access roads in the area are completed; Electricity is ensured, Three-phase electric power. Each parcel has a timer, installed water mains and sewage system.
Ownership	Municipality of Čitluk
Inputs required from foreign partner	Selling, 4-16 per m ²






BUSINESS ZONE ŠIPAD, KONJIC	
Location	Konjic
Workshop surface	200.000 m ²
Project description	Business zone Šipad is industrial wood processing zones in the urban area of the municipality of Konjic. Business zone is provided by spatial and urban planning and is recorded in land registry and fragmented.
In the business zone there are also the following supplementary facilities; sewage collector, fire service, insurance services and electrical networks.	Hotels, Golf Course, Tennis Swimming Pools, Ski Lifts
Access to main road	Yes, Šipad Business Zone is situated 60km from the airport and is connected with main roads.
	

BUSINESS ZONE TROMEDA, ČITLUK

Location	Čitluk
Workshop surface	4000.000 m ²
Project description	Business zone Tromeda is industrial zones in the urban area of the municipality of Čitluk. Business zone is defined by spatial and urban planning documents and is recorded in land registry. In the business zone there are also the following supplementary facilities; restaurant, parking... The land is divided up into 75 parcels.
Access to main road	Yes, Tromeda Business Zone is situated 35km from the airport, 45 km from the sea and is connected with main roads.
Infrastructure	Yes, Infrastructural works on the access roads in the area are completed; Electricity is ensured, Three-phase electric power. Each parcel has a timer.
Ownership	Municipality of Čitluk
Inputs required from foreign partner	Selling, 17-35 per m ²



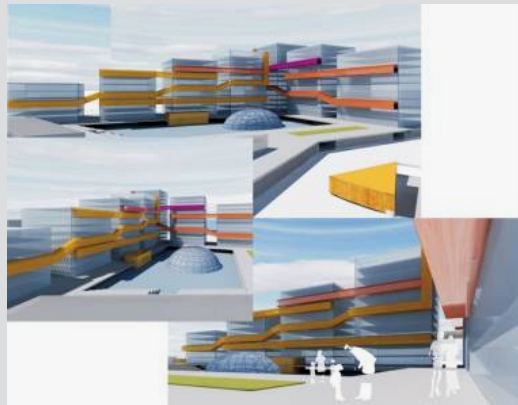


BUSINESS ZONE UNIS, KONJIC	
Location	Konjic
Workshop surface	200.000 m ²
Project description	Business zone Unis is industrial metal processing zones in the urban area of the municipality of Konjic. Business zone is provided by spatial and urban planning and is recorded in land registry and fragmented.
In the business zone there are also the following supplementary facilities; sewage collector, fire service, insurance services and electrical networks.	Yes
Access to main road	Yes, Unis Business Zone is situated 60km from the airport and is connected with main roads.
Infrastructure	Yes, Infrastructural works on the access roads in the area are completed; Electricity is ensured, manpower to 5 MW. Each parcel has a timer, installed water mains and sewage system.
Ownership	Municipality of Konjic
Inputs required from foreign partner	Selling, 10-15KM per m ²
	




NBC CENTER - NEW BUSINESS - COMMERCIAL CENTER

Location	Sarajevo, Bosnia and Herzegovina
Estimated total investment cost	80.000.000 – 100.000.000 € Investment cost is based on an assessment of complex construction and land value
Type of financial investment	External equity, looking for new partner/investor
Project description	Construct on attractive urban location within the new, designed traffic solution of Sarajevo bypass. Create your own facilities and become a center of recognizable business for the region of Southeast Europe in the capital of B&H at approximately 40.000 sq.m. area, only 6,0 km away from city center.
Type of other (technical) cooperation sought from foreign sources	Sale and cooperation in execution of construction works during the project realization; possible partnership and other form of investment.
Ownership	67% is the state-owned capital, while the other part in amount of 33% is owned by the small shareholders

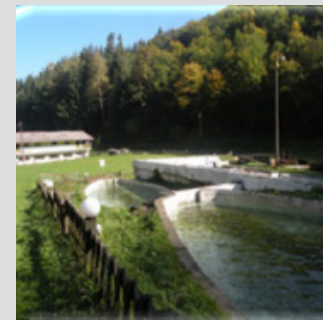




FACTORY/BUSINESS PROPERTY FOR SALE KNEŽICA	
Location	Knezica, Kozarska Dubica municipality, RS, BiH
Land surface	2000 m ²
Project Status	Business property for sale
Project Description	Industrial property for sale, 60% renewed, can be used for any business activity. It consists of approx 1800 m ² of production space, 5 garages, own well (water supply unit), apartment, canteen for workers etc. Formerly used in apparel industry. It is located on 11000sqm of construction land, surrounded by steel fence. Private property, with no legal burden, all valid documentation and pictures available upon request (land book documentation, other proofs of ownership and Certificate of occupancy etc.)
Estimated Total Investment Cost	Negotiable
Location Description	Property is located nearby Prijedor and Kozarska Dubica (15km). It is placed on a lovely hilly landscape, with all needed infrastructure and approaching roads
Ownership	Private
	

ZUNOVNICA MILITARY BASE – TRANSFORMATION - Municipality Hadzici

Location	Hadzici - Sarajevo
Land surface	180 ha
Transformation of existing Military Base to	Sport-Tourist and Recreation Center
Facilities	Hotels, Golf Course, Tennis Swimming Pools, Ski Lifts
Infrastructure	To be adapted to new purposes
TOTAL INVESTMENT (Phase 1)	€ 5,000,000
Ownership	Public





BUSINESS ZONE GLINISTE-TESANJ - Municipality Tesanj	
Location	Jelah - Tesanj
Land surface (76 ha)	€ 1,600,000
Commercial-Producing buildings and infrastructure (7,000 m2)	€ 3,100,000
Residential - Commercial buildings and infrastructure (32,000 m2)	€ 19,300,000
TOTAL INVESTMEN	€ 24,000,000
Ownership	Private / Public (Municipality Tasanj)



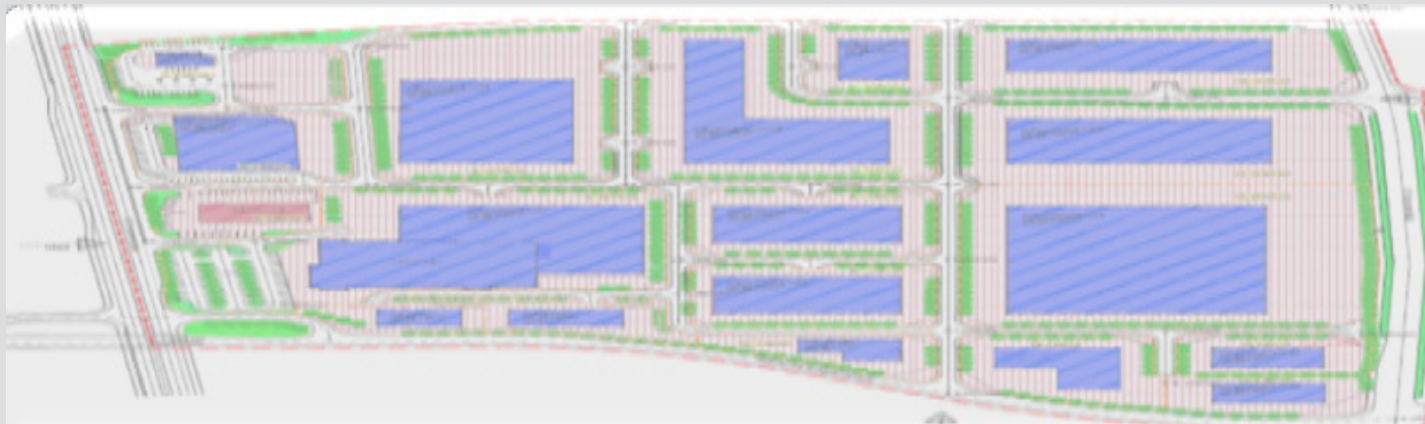
BUSINESS PARK - GRACANICA - Sirbegovic Ltd.

Location	Gracanica
Land surface	50 ha
Facilities to be constructed	Hotel, R&D and Trade center; Production & Sale facilities, Storage area
Infrastructure railway/road access	Yes
TOTAL INVESTMEN	€ 60,000,000
Ownership	Private





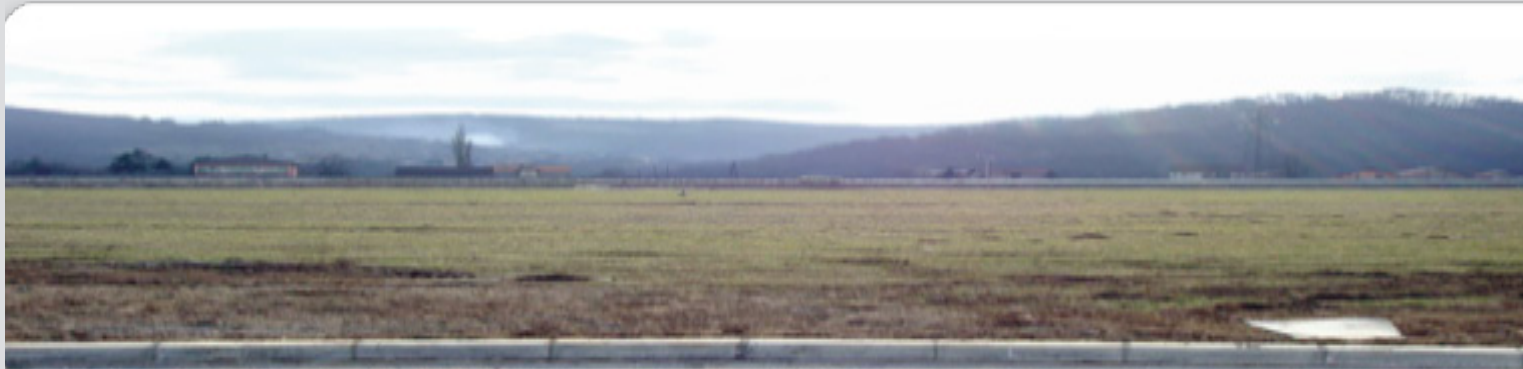
BUSINESS ZONE STUP - Vranica Ltd.	
Location	Stup - Sarajevo
Land surface	7 ha
Buildings area	170.000 m2 / Maximal permitted height 25 m
Infrastructure, Access to railway & road	Yes
Property price	€ 200 / m2
Ownership	Private






INDUSTRIAL ZONE LUKE - ILIJAS

Location	Ilijas, Sarajevo
Land surface (Greenfield site development)	As per jointly agreed project conception
Infrastructure	To be constructed
Access to railway / main road	Yes
TOTAL INVESTMEN	€ 2,000,000
Ownership	Municipality Ilijas



REGIONAL FOOD CENTRE - Konstrukt Ltd.	
Location	Sarajevo
Land surface + Technical documentation already exist (30 ha)	€ 41,000,000
Storing capacities (35.000 m2) , Silos, Terminals, Food production, Wholesale & Retail facilities, Recreation facilities	€ 209,000,000
TOTAL INVESTMEN	€ 250,000,000
Ownership	Private
Ownership	Municipality Ilijas



Zone 1

1. RAIL TERMINAL AND WAREHO
2. COMMODITY RESERVES WAREHO
3. PASTORAGE WAREHOUSE
4. CHEMICAL DEPOTS
5. PRODUCTION PLANT
6. COLD STORAGE PLANT
7. TRUCK TERMINALS
8. WHOLESALE TRADE
9. SILOS 100.000 TONES

Zone 2

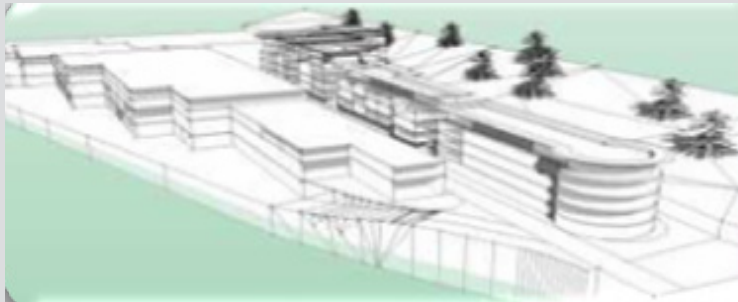
1. AREA FOR SILOS ENLARGMENT
2. WAREHOUSE ENLARGMENT
3. COLD STORAGE PLANT ENLARGM

Zone 3

1. EXHIBITION CENTRE
2. SHOPPING CENTRE
3. OLYMPIC POOL
4. RECREATION CENTRE

LOGISTIC CENTER BALKAN SARAJEVO - General Logistic Ltd.

Location	Vogosca - Sarajevo
Land surface	2.27 ha
Warehouse (Offices; High-shelf; Horizontal)	10,000 m ² (10%; 60%; 30%)
Asphalt surface	10,000 m ²
Infrastructure, Access	All utilities, Access to railway and main road
TOTAL INVESTMEN (Grass root facility construction)	€ 5,800,000
Ownership	Private





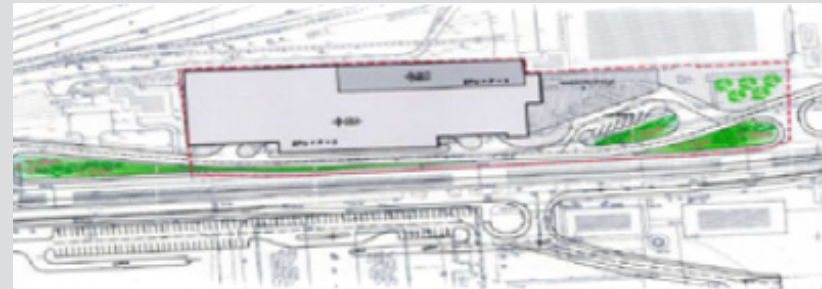
TRADING CENTRE VMC – MALCom Ltd.

Location	Sarajevo
Land surface	15,000 m ²
Building - 6 floors	42,000 m ²
Underground garage	2 floors
Building - 18 floors	17,000 m ²
TOTAL INVESTMEN	€ 100,000,000
Ownership	Private



TRAFFIC BUSINESS CENTER - Centrotrans Eurolines Ltd.

Location	Sarajevo
6 Floors Building	4 + 2 Underground
Bus station facilities + Shops, Craft & Service area + Hotel (90-120 rooms)	5,598 m ² + 5,744 m ² + 2,851 m ²
Underground garage	2 x 5,857m ²
TOTAL INVESTMENT:	€ 17,000,000
Local Partner	€ 5,000,000
	€ 12,000,000
Ownership	Private



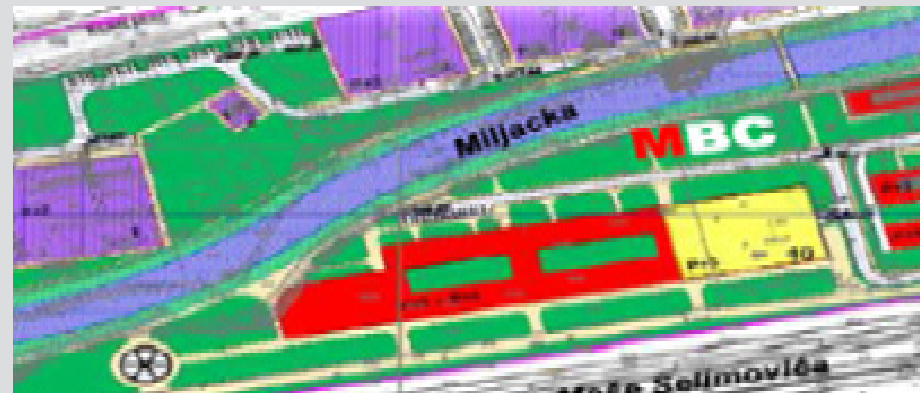


BUSINESS CITY – Hecoprom Ltd.	
Location	Sarajevo
Existing facilities: Land, Infrastructure, Hotel and Phase 1 of Business center	€ 70,000,000
Completion of Phase 1 + Phase 2 of Business center	€ 70,000,000
TOTAL INVESTMENT	€ 140,000,000
Local partner	€ 72,000,000
JV Partner	€ 68,000,000
Ownership	Private

	
--	---

MEDIA BUSINESS CENTRE- Radio Television of BiH

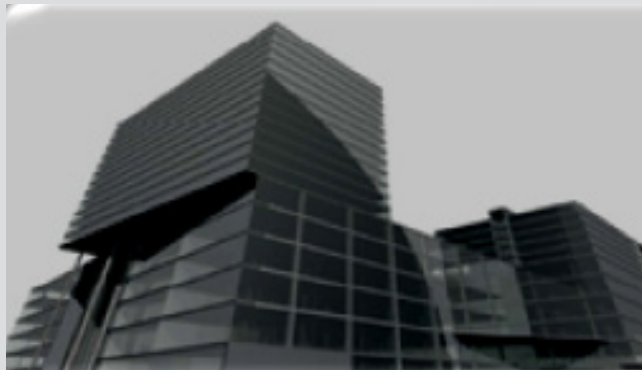
Location	Sarajevo
Land surface	21,500 m ²
3 Buildings - GF +2 (65x45 + 55x45 + 45x30)	38,500 – 45,000 m ²
Garage (60x45 m)	21,600 – 30,000 m ²
Possible additional construction	Underground floors
TOTAL INVESTMENT	To be jointly agreed
Ownership	State





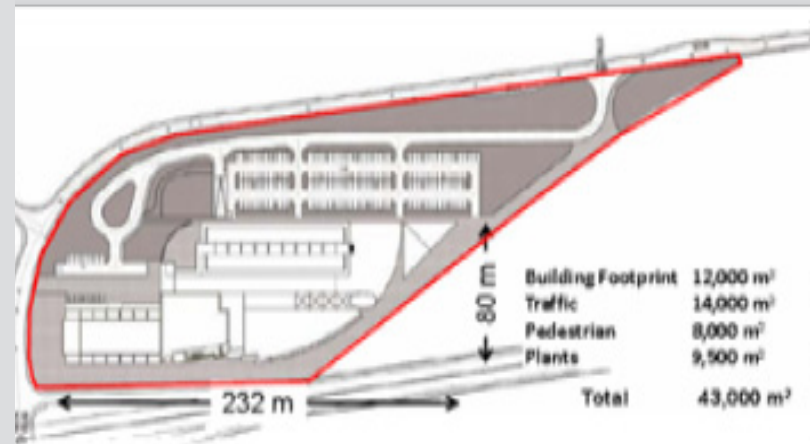
WILSON PLAZA - HOTEL OFFICE CENTER- MIMS Group Development Ltd.

Location	Sarajevo
Total building surface	95,000 m ²
2 Hotel & Office Towers	75% offices - 25% hotel
Other facilities	Underground garage; Mezzanine (retail & restaurants); Multi level roundabouts
TOTAL INVESTMENT	€ 90,000,000 (Equity € 35 million; Debt € 55 million)
Expected JV Partner Equity	€ 25 million
Ownership	Private



BETANIJA CITY CENTER – Ascendant Ltd.

Location	Sarajevo
Land	43,000 m ²
Hotel & Convention, Wellness, Shopping Center + Traffic, Pedestrian, Plants	12,000 m ² + 31,500 m ²
TOTAL INVESTMENT:	€ 60,000,000
Ownership	Private



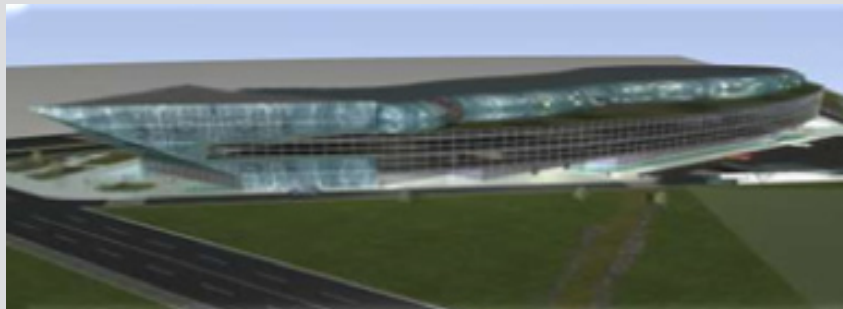
SETTLEMENT NOVAVOGOSCA- Bhservis Ltd, Sarajevo

Location	Vogosca, Sarajevo
Total land surface	9.5 ha
11 Residential-business buildings (1,250 residential units) + Parking	12,414 m ²
Office/Commercial units, Sport Fields, Fitness Centre, Kindergarten, etc.	Located in ground floors
Shopping Center, Hypermarket	7,500 m ²
TOTAL INVESTMENT	€ 65,000,000
Local partner	€ 14,000,000
Strategic partner (loan)	€ 51,000,000
Ownership	Private



MULTIPLEX CITY- OTOKA MEANDER - Meander-Invest Ltd

Location	Sarajevo
Land surface	12.600 m ²
Ground floor + 3 floors (1 floor hotel) + Underground garage	8,800m ² +30,000m ² (10,000 m ²) + 25,000m ²
Land	€ 7,670,000
Construction & Equipment	€ 45,430,000
TOTAL INVESTMENT:	€ 53,100,000
Local Partner + EBRD	€ 26,000,000
Strategic Partner	€ 27,100,000
Ownership	Private





PUBLIC PARKING GARAGE TEKIJJA - Invest KS Co.

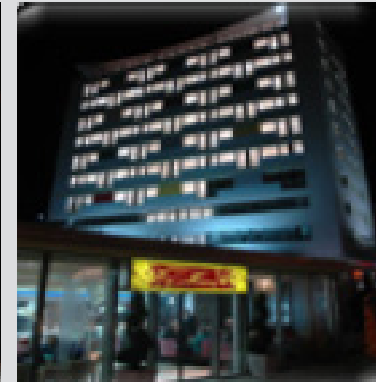
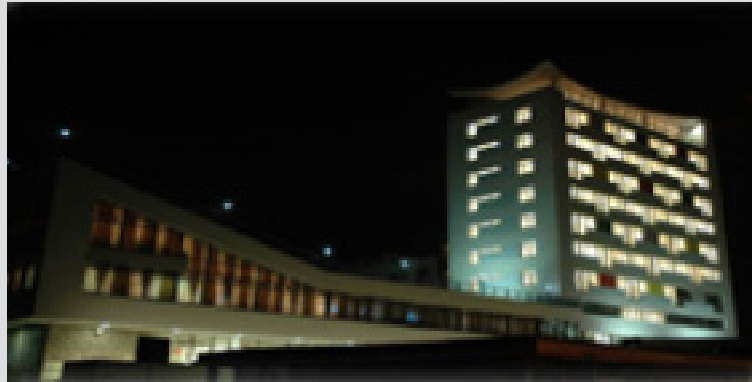
Location	Sarajevo
Total area	Basement, Ground, 3 Floors, Roof
Total parking spaces	191
TOTAL INVESTMENT:	€ 2,5 million
Local / Strategic Partner	€ 0.7 million / € 1.8 million
Ownership	Private





METALURG CITY CENTER - NBI Curic Ltd, Zepce

Location	Zenica
Existing Accommodation & Business complex value	€ 21,000,000
TOTAL INVESTMENT (Restructuring & Expanding & Upgrading)	€ 25,500,000
Local partner	€ 10,500,000
Strategic partner (Become owner of 70% of total property)	€ 15,000,000
Ownership	Private





HOTEL POSTA RECONSTRUCTION, MALCom Ltd.

Location	Sarajevo
Existing Hotel, Restaurant, etc.	Restructuring & Expanding & Upgrading
Underground garage (new construction)	500 places
TOTAL INVESTMEN	€ 5,000,000
Ownership	Private



BUSINESS & ENTERTAINMENT CENTER SA Dundee Group

Location	Sarajevo
Land surface (50,000 m2)	€ 5,000,000
Construction & Equipment	€ 17,000,000
Initial Capital & Contingency	€ 8,000,000
TOTAL INVESTMENT:	€ 30,000,000
Local Partner	€ 7,500,000
Strategic Partner	€ 22,500,000
Ownership	Private





BUSINES COMPLEX "S2" Sarajevo Butmir Co.

Location	Sarajevo
Total area	48,000 m2
Offices	24,000 m2
Underground Floors / Garages	3 + 340
S2 A + S2 B + S2 C	12 + 14 + 16 floors
TOTAL INVESTMENT:	€ 37 million
Local / Strategic Partner	€ 7 mill./ €30 million
Ownership	Private





RESIDENTIAL & BUSINESS FACILITIES

Location	Skenderija, Sarajevo
Residential units	2,780 m2
Business-unit	413 m2
Garage + Outdoor parking	37 + 6 parking spaces
Investment	€ 3,900,000
Ownership	Private (CET BAH)





OLD AGE HOME	
Location	Hadzici, Sarajevo
Site	Appropriate location
Capacity	250 users
Access to main roads	Yes
Investment	€ 2,800,000
Ownership	Private (CET BAH)





BUSINESS & TORAGE CENTER – Atashe Co.

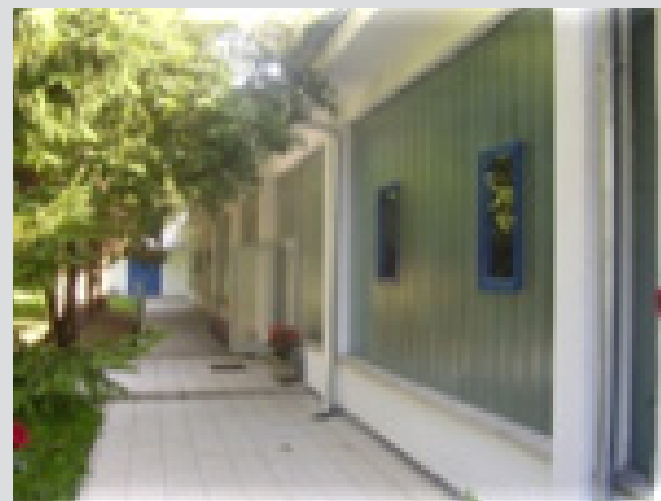
Location	Blazuj - Sarajevo
Land surface	4,600 m ²
2 Floors Storage – Production 50x24x11 m	2,400 m ²
3 Floors Office Space 10x12x11 m	360 m ²
Infrastructure + Paved parking (1840 m ²)	All utilities, High capacity lift, Access to railway/road
Ownership	Private





INDUSTRIAL PROPERTY - ZLATKA

Location	Knezica. B. Luka
Facilities / Buildings	2,000 m ²
Site surface	10,500 m ²
Access to road & railway	Yes
Infrastructure	Yes
Ownership	Private





INDUSTRIAL PROPERTY - ZLATKA

Location	Knezica. B. Luka
Facilities / 3 Workshops	5,800 m ²
Site surface	109,000 m ²
Access to road & railway	Yes
Infrastructure	Yes
Ownership	Private





INDUSTRIAL PROPERTY - SOCKOVAC

Location	Gracanica - Sockovac
Workshop + Brick Driers	8,607 m ² + 1,580 m ²
Fuel storage + Substation	500 m ³ + 2 x 630 KW
Access to road & railway	Yes
Infrastructure	Yes
Ownership	Private



INDUSTRIAL PROPERTY - PELAGICEVO

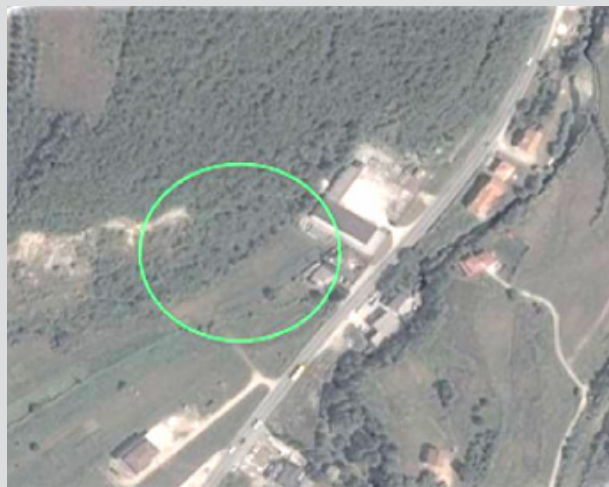
Location	Pelagicevo
Workshop + Substation	900 m2 + 160 KW
Site surface	12.000 m2
Access to road & railway	Yes
Infrastructure	Yes
Ownership	Private





INDUSTRIAL PROPERTY – HAREX

Location	Hadzici Industrial Zone
Workshop + Offices	1,300 m2 + 400 m2
Site surface	7,578,00 m2
Access to main road	Yes
Infrastructure	Yes
Ownership	Private



BUSINESS PROPERTY - BOSSNIAINVEST

Location	Industrial Zone Bacici
Three Floor Building	2,895 m ²
Site surface	4,000 m ²
Access to road & railway	Yes
Infrastructure	Yes
Ownership	Private





INDUSTRIAL PROPERTY - FOJNICA

Location	Fojnica -Sarajevo
Workshop surface	10,000 m2
Workshop dimensions	80 x 125 m; Height 8 m
Access to main road	Yes
Infrastructure	Yes
Ownership	Private





“CATAGO SPORT” d.o.o. Lušci Palanka

Location	Lušci Palanka, Sanski Most
Workshop surface	1,1 ha of land and 5000m ² of building space
Project description	Object can be used for all purposes: for factory of furniture, textiles, footwear, leather, food, juices, water, milk and milk products, etc
Access to main road	Yes
Infrastructure	Yes
Ownership	Private
Inputs required from foreign partner	Selling, value 1 650 000,00 BAM





BUSINESS ZONE "LIPOVA GREDA"	
Location	Municipality Kozarska Dubica
Workshop surface	69 ha of land
Project description	Business zone is intended for small and medium enterprises operating in various productive sectors. Total investment Coast: 20 500 000 BAM
Access to main road	Yes, Zagreb-Belgrade highway is just 19 km away and connects the Business zone "Lipova Greda" with all major centers in the region and further into Europe (Zagreb 100 km, Belgrade 322 km, Ljubljana 267 km).
Infrastructure	Yes, Infrastructural works on the access roads in the area are completed, and dual rainwater sewage and waste water network and the complete water supply network are built. In cooperation with Elektrokrajina power station of 1 MW capacity is installed, enabling electricity connection access to investors in the Business Zone "Lipova Greda".
Ownership	Private
Inputs required from foreign partner	Selling, value 1 200 000 BAM



INDUSTRIAL PROPERTY - USORA

Location	Usora
Facilities / 3 Workshops	4,000m ²
Site surface	30,000 m ²
Access to road & railway	Yes
Infrastructure	Yes
Ownership	Private





ENERGOINVEST STUP

Location	Ilidza
Geographical sector	Sarajevo region
Zone surface	50 ha
Access to road & railway	Yes
Infrastructure	Yes
Ownership	70% private-30% state





FAMOS HOLDING

Location	Hrasnica
Geographical sector	Sarajevo region
Zone surface	33 ha
Access to road & railway	Yes
Infrastructure	Yes
Ownership	50% private-50% state





VLAKOVO	
Location	Blazuj
Geographical sector	Sarajevo region
Zone surface	32 ha
Access to road & railway	Yes
Infrastructure	Yes
Ownership	100% private



back



FREE ZONE - TAS

Location	Vogosca
Geographical sector	Sarajevo region
Zone surface	13.5 ha
Access to road & railway	Yes
Infrastructure	Yes
Ownership	30% private-70% state





RAJLOVAC	
Location	Sarajevo Novi Grad
Geographical sector	Sarajevo region
Zone surface	118.5 ha
Access to road & railway	Yes
Infrastructure	Yes
Ownership	80% private-20% state



Energoinvest – RAOP

Location	Istocno Sarajevo
Geographical sector	Sarajevo region
Zone surface	13.5 ha
Access to road & railway	Yes
Infrastructure	Yes
Ownership	100% private





TERMOAPARATI

Location	Istocno Sarajevo
Geographical sector	Sarajevo region
Zone surface	2.5 ha
Access to road & railway	Yes
Infrastructure	Yes
Ownership	85% private-15% state





Energoinvest AUTOMATIKA

Location	Istocno Sarajevo
Geographical sector	Sarajevo region
Zone surface	2 ha
Access to road & railway	Yes
Infrastructure	Yes
Ownership	85% private-15% state





FAMOS- KORAN

Location	Pale
Geographical sector	Sarajevo region
Zone surface	8.5 ha
Access to road & railway	Yes
Infrastructure	Yes
Ownership	55% private- 45% state





POBJEDA	
Location	Gorazde
Geographical sector	Sarajevo region
Zone surface	50 ha
Access to road & railway	Yes
Infrastructure	Yes
Ownership	67% private-33 % state





VITKOVICI	
Location	Gorazde
Geographical sector	Sarajevo region
Zone surface	1.7 ha
Access to road & railway	Yes
Infrastructure	Yes
Ownership	90% private-10 % state

02/05/2006



CENTAR I

Location	Novo Gorazde
Geographical sector	Sarajevo region
Zone surface	5 ha
Access to road & railway	Yes
Infrastructure	Yes
Ownership	100% private





SOCA	
Location	Novo Gorazde
Geographical sector	Sarajevo region
Zone surface	1.5 ha
Access to road & railway	Yes
Infrastructure	Yes
Ownership	100% private



ZELJEZARA

Location	Ilijas
Geographical sector	Sarajevo region
Zone surface	45.5 ha
Access to road & railway	Yes
Infrastructure	Yes
Ownership	100% private





POTKRAJ - BRETEX

Location	Breza
Geographical sector	Sarajevo region
Zone surface	27.5 ha
Access to road & railway	Yes
Infrastructure	Yes
Ownership	100% private





RUDNIK MRKOG UGLJA

Location	Breza
Geographical sector	Sarajevo region
Zone surface	27.5 ha
Access to road & railway	Yes
Infrastructure	Yes
Ownership	100% state





UNIS KOMERC	
Location	Breza
Geographical sector	Sarajevo region
Zone surface	0.5 ha
Access to road & railway	Yes
Infrastructure	Yes
Ownership	Private/State 20% /80%



TERPENTIN

Location	Visegrad
Geographical sector	Sarajevo region
Zone surface	11.5 ha
Access to road & railway	Yes
Infrastructure	Yes
Ownership	Bankruptcy process





ZITO	
Location	Visegrad
Geographical sector	Sarajevo region
Zone surface	1 ha
Access to road & railway	Yes
Infrastructure	Yes
Ownership	Bankruptcy process





STUPCANICA

Location	Olovo
Geographical sector	Sarajevo region
Zone surface	12 ha
Access to road & railway	Yes
Infrastructure	Yes
Ownership	Private/State 49% / 60%





OLA - FABRIKA RUBLJA

Location	Olovo
Geographical sector	Sarajevo region
Zone surface	1 ha
Access road & railway	Yes
Infrastructure	Yes
Ownership	100% state





RUDNIK MRKOG UGLJA MILJEVINA

Location	Foca
Geographical sector	Sarajevo region
Zone surface	20 ha
Access road & railway	Yes
Infrastructure	Yes
Ownership	100% state





BROD NA DRINI	
Location	Foca
Geographical sector	Sarajevo region
Zone surface	34 ha
Access to road & railway	Yes
Infrastructure	Yes
Ownership	100% state



BALJEVO POLJE & AVDACA LUKA

Location	Foca
Geographical sector	Sarajevo region
Zone surface	13 ha
Access to road & railway	Yes
Infrastructure	Yes
Ownership	100% private





VARES MAJDAN

Location	Vares
Geographical sector	Sarajevo region
Zone surface	20 ha
Access to road & railway	Yes
Infrastructure	Yes
Ownership	80% private – 10% state






VRHOVINE

Location	Vares
Geographical sector	Sarajevo region
Zone surface	30 ha
Access to road & railway	Yes
Infrastructure	Yes
Ownership	50% private – 50% state





PONIKVE	
Location	Vares
Geographical sector	Sarajevo region
Zone surface	0.5 ha
Access to road & railway	Yes
Infrastructure	Yes
Ownership	100% private





SIPAD VRANICA

Location	Fojnica
Geographical sector	Sarajevo region
Zone surface	15 ha
Access to road & railway	Yes
Infrastructure	Yes
Ownership	100% state





TVORNICA LEZAJEVA UNIS

Location	Sokolac
Geographical sector	Sarajevo region
Zone surface	5 ha
Access to road & railway	Yes
Infrastructure	Yes
Ownership	55% private - 45% state



back



STAKORINA

Location	Cajnice
Geographical sector	Sarajevo region
Zone surface	4 ha
Access to road & railway	Yes
Infrastructure	Yes
Ownership	20% private - 80% state





FORMER MILITARY BASE - PRACANKA

Location	Pale
Geographical sector	Sarajevo region
Zone surface	1 ha
Access to road & railway	Yes
Infrastructure	Yes
Ownership	100% state






FORMER MILITARY BASE

Location	Kalinovik
Geographical sector	Sarajevo region
Zone surface	14 ha
Access to road & railway	Yes
Infrastructure	Yes
Ownership	100% state





ZENICA 1	
Location	Zenica
Geographical sector	Central B & H Region
Zone surface	34 ha
Access to road & railway	Yes
Infrastructure	Yes
Ownership	18% private - 82% state





VITEZIT

Location	Vitez
Geographical sector	Central B & H Region
Zone surface	220 ha
Access to road & railway	Yes
Infrastructure	Yes
Ownership	100% state





BORAC	
Location	Travnik
Geographical sector	Central B & H Region
Zone surface	18 ha
Access to road & railway	Yes
Infrastructure	Yes
Ownership	100% private



KRIVAJA

Location	Zavidovici
Geographical sector	Central B & H Region
Zone surface	40 ha
Access to road & railway	Yes
Infrastructure	Yes
Ownership	30% private – 70% state





TURBE	
Location	Travnik
Geographical sector	Central B & H Region
Zone surface	20 ha
Access to road & railway	Yes
Infrastructure	Yes
Ownership	80% private–20% state



NOVA BILA

Location	Travnik
Geographical sector	Central B & H Region
Zone surface	14 ha
Access to road & railway	Yes
Infrastructure	Yes
Ownership	90% private–10% state





MMK BRATSTVO

Location	Novi Travnik
Geographical sector	Central B & H Region
Zone surface	50 ha
Access to road & railway	Yes
Infrastructure	Yes
Ownership	60% private – 40% state





BUGOJNO 1

Location	Bugojno
Geographical sector	Central B & H Region
Zone surface	37 ha
Access to road & railway	Yes
Infrastructure	Yes
Ownership	87% private–13%state





INDUSTRIJSKO - DRVNI KOMPLEKS

Location	Teslic
Geographical sector	Central B & H Region
Zone surface	26 ha
Access to road & railway	Yes
Infrastructure	Yes
Ownership	40% private – 60% state



TMP MEDIJAPAN

Location	Busovaca
Geographical sector	Central B & H
Zone surface	11 ha
Access to road & railway	Yes
Infrastructure	Yes
Ownership	100% private





ZARKOVACKO POLJE

Location	Teslic
Geographical sector	Central B & H Region
Zone surface	40 ha
Access to road & railway	Yes
Infrastructure	Yes
Ownership	90% private-10% state





IZ DONJI VAKUF

Location	Donji Vakuf
Geographical sector	Central B & H
Zone surface	140 ha
Access to road & railway	Yes
Infrastructure	Yes
Ownership	90% private-10% state





BATUSKI LUG

Location	Gornji Vakuf/Uskoplje
Geographical sector	Central B & H Region
Zone surface	50 ha
Access to road & railway	Yes
Infrastructure	Yes
Ownership	50% private -50% state





KAMENICA

Location	Gornji Vakuf/Uskoplje
Geographical sector	Central B & H Region
Zone surface	23 ha
Access to road & railway	Yes
Infrastructure	Yes
Ownership	100% private





MILITARY BASE DRAGA

Location	Busovaca
Geographical sector	Central B & H Region
Zone surface	15 ha
Access to road & railway	Yes
Infrastructure	Yes
Ownership	100% state



back



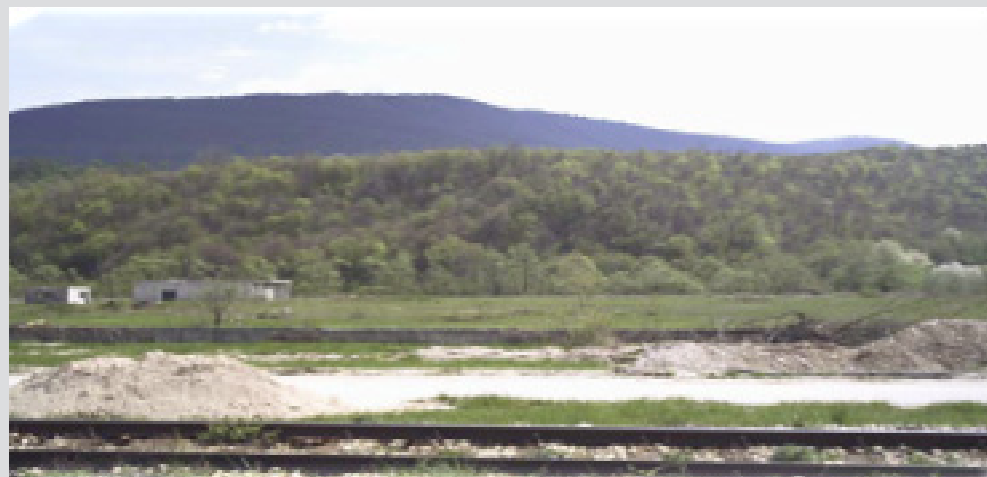
GREENFIELD INDUSTRIAL & BUSINESS ZONES FOR DEVELOPMENT

UGORSKO	
Location	Vogosca
Geographical sector	Sarajevo region
Zone surface	13.5 ha
Access to road & railway	No
Infrastructure	No
Ownership	100% state



BOCE – BINJEZEVO

Location	Hadzici
Geographical sector	Sarajevo region
Zone surface	7 ha
Access to road & railway	Yes
Infrastructure	Yes
Ownership	60% private- 40% state





MERDZANOVICA POLJE

Location	Hadzici
Geographical sector	Sarajevo region
Zone surface	10 ha
Access to road & railway	Yes
Infrastructure	Yes
Ownership	55% private-45% state





DONJE TELALOVO POLJE

Location	Ilidza
Geographical sector	Sarajevo region
Zone surface	35 ha
Access to road & railway	Yes
Infrastructure	No
Ownership	100% private



back



BACICI

Location	Ilidza
Geographical sector	Sarajevo region
Zone surface	23 ha
Access to road & railway	Yes
Infrastructure	No
Ownership	100% private





DOBRINJA - KULA

Location	Ilidza Istocno Sarajevo
Geographical sector	Sarajevo region
Zone surface	5 ha
Access to road & railway	Yes
Infrastructure	Yes
Ownership	90% private – 10% state





VOJKOVICI

Location	Ilidza Istocno Sarajevo
Geographical sector	Sarajevo region
Zone surface	5 ha
Access to road & railway	Yes
Infrastructure	No
Ownership	100% private





ARNAUTOVICKO - OZRAKOVICKO POLJE

Location	Visoko
Geographical sector	Sarajevo region
Zone surface	20 ha
Access to road & railway	Yes
Infrastructure	Yes – partly
Ownership	100% private





BANJERSKO POLJE

Location	Visoko
Geographical sector	Sarajevo region
Zone surface	5 ha
Access to road & railway	Yes
Infrastructure	Yes
Ownership	100% private





DOBRINJE	
Location	Visoko
Geographical sector	Sarajevo region
Zone surface	10 ha
Access to road & railway	Yes
Infrastructure	Yes
Ownership	100% private



DUGO POLJE

Location	Kiseljak
Geographical sector	Sarajevo region
Zone surface	27 ha
Access to road & railway	Yes
Infrastructure	Yes – partly
Ownership	100% state





RESNIK	
Location	Kresevo
Geographical sector	Sarajevo region
Zone surface	1.5 ha
Access to road & railway	Yes
Infrastructure	Yes
Ownership	100% state



back



RASADNIK

Location	Gorazde
Geographical sector	Sarajevo region
Zone surface	3 ha
Access to road & railway	Yes
Infrastructure	Yes - partly
Ownership	100% state





LUCKO POLJE

Location	Ilijas
Geographical sector	Sarajevo region
Zone surface	20 ha
Access to road & railway	Yes
Infrastructure	Yes - partly
Ownership	100% private



back



DANAC

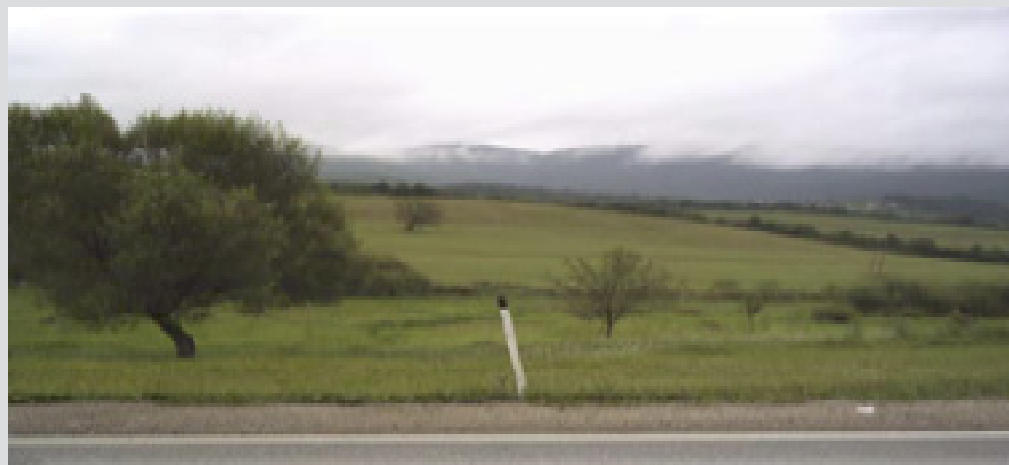
Location	Olovo
Geographical sector	Sarajevo region
Zone surface	3 ha
Access to road & railway	Yes
Infrastructure	Yes
Ownership	90% private- 10% state





KOVANJ I BORAC

Location	Rogatica
Geographical sector	Sarajevo region
Zone surface	5 ha
Access to road & railway	Yes
Infrastructure	Yes
Ownership	70% private-30% state





ZAGANOVICI

Location	Rogatica
Geographical sector	Sarajevo region
Zone surface	20 ha
Access to road & railway	Yes
Infrastructure	Yes
Ownership	75% private- 25% state





VRBNICKI POTOK

Location	Foca – Ustiklina
Geographical sector	Sarajevo region
Zone surface	30 ha
Access to road & railway	Yes
Infrastructure	Yes
Ownership	100% state



back



PODROMANIJA

Location	Sokolac
Geographical sector	Sarajevo region
Zone surface	15 ha
Access to road & railway	Yes
Infrastructure	Yes
Ownership	75% private- 25% state





MILIJENO	
Location	Cajnice
Geographical sector	Sarajevo region
Zone surface	50 ha
Access to road & railway	Yes
Infrastructure	Yes
Ownership	100% private



LOPATA

Location	Trnovo RS
Geographical sector	Sarajevo region
Zone surface	10 ha
Access to road & railway	Yes
Infrastructure	Yes
Ownership	100% private





VUCIJA LUKA	
Location	Istocno Sarajevo
Geographical sector	Sarajevo region
Zone surface	0.5 + 50 ha (state owner)
Access to road & railway	Yes
Infrastructure	Yes
Ownership	100% private + 100% state



back



TOURISM, AGRICULTURE, BUSINESS-RESIDENTIAL ZONES & PROPERTIES FOR DEVELOPMENT

MARIJIN DVOR	
Location	Centar - Sarajevo
Geographical sector	Sarajevo region
Zone surface	14 ha
Access to road & railway	Yes
Infrastructure	Yes
Ownership	100% state

	
---	--



ECO - TOURISM CAMP USTIPRACA

Location	Novo Gorazde
Geographical sector	Sarajevo region
Zone surface	1.5 ha
Access to road & railway	Yes
Infrastructure	Yes
Ownership	100% state



back



CVILIN & ODZAK

Location	Foca – Ustiklina
Geographical sector	Sarajevo region
Zone surface	17 ha
Access to road & railway	Yes
Infrastructure	Yes
Ownership	100% state





MRAVICI	
Location	Mravici, Doboju Jug
Geographical sector	Central B & H Region
Zone surface	13 ha
Access to road & railway	Yes
Infrastructure	Yes
Ownership	100% private





MATUZICI

Location	Doboj Jug
Geographical sector	Central B & H Region
Zone surface	50 ha
Access to road & railway	Yes
Infrastructure	Yes
Ownership	95% private–5% state





BUGOJNO 2

Location	Mravici, Dobož Jug
Geographical sector	Central B & H Region
Zone surface	13 ha
Access to road & railway	Yes
Infrastructure	Yes
Ownership	100% private





RUZEVACKA POLJA

Location	Teslic
Geographical sector	Central B & H Region
Zone surface	30 ha
Access to road & railway	Yes
Infrastructure	Yes - partly
Ownership	100% private





RADNO - KOMUNALNA IZ

Location	Teslic
Geographical sector	Central B & H Region
Zone surface	63 ha
Access to road & railway	Yes
Infrastructure	Yes - partly
Ownership	100% private





NEOBARJE

Location	Novi Travnik
Geographical sector	Central B & H Region
Zone surface	55 ha
Access to road & railway	Yes
Infrastructure	Yes - partly
Ownership	40% private–60% state





LJESNICA

Location	Maglaj
Geographical sector	Central B & H Region
Zone surface	16 ha
Access to road & railway	Yes
Infrastructure	Yes - partly
Ownership	100% private





NOVI SEHER

Location	Maglaj
Geographical sector	Central B & H Region
Zone surface	14 ha
Access to road & railway	Yes
Infrastructure	Yes - partly
Ownership	100% private





MRKOTIC	
Location	Tesanj
Geographical sector	Central B & H Region
Zone surface	20 ha
Access to road & railway	Yes
Infrastructure	Yes - partly
Ownership	100% private



back



MILJANOVAC

Location	Tesanj
Geographical sector	Central B & H Region
Zone surface	20 ha
Access to road & railway	Yes
Infrastructure	Yes - partly
Ownership	100% private





LJETINIC	
Location	Tesanj
Geographical sector	Central B & H Region
Zone surface	30 ha
Access to road & railway	Yes
Infrastructure	Yes - partly
Ownership	90% private – 10 state



back



LJESKOVAC-ROSULJE

Location	Tesanj
Geographical sector	Central B & H Region
Zone surface	40 ha
Access to road & railway	Yes
Infrastructure	Yes - partly
Ownership	100% state





KRASEVO

Location	Tesanj
Geographical sector	Central B & H Region
Zone surface	40 ha
Access to road & railway	Yes
Infrastructure	Yes
Ownership	100% private

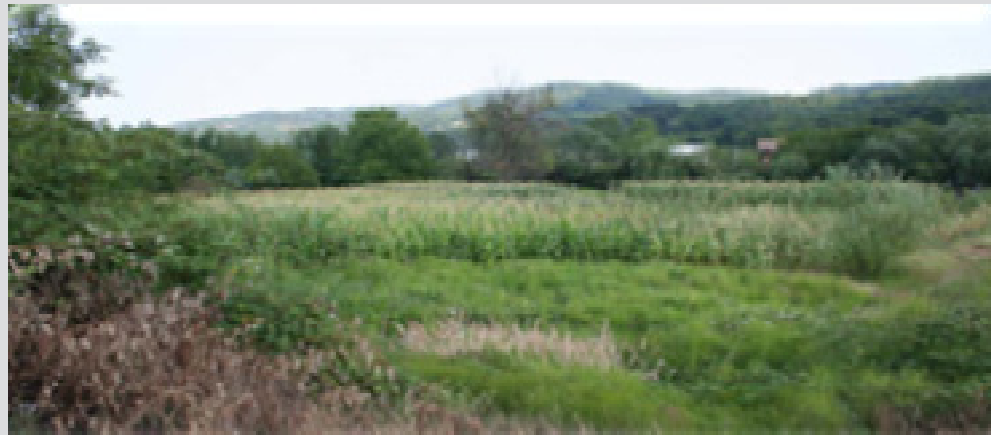


back



MAJDANSKA POLJA

Location	Zavidovici
Geographical sector	Central B & H Region
Zone surface	15 ha
Access to road & railway	Yes
Infrastructure	Yes
Ownership	60% private–40% state





EKONOMIJA-BATVICE

Location	Zavidovici
Geographical sector	Central B & H Region
Zone surface	33 ha
Access to road & railway	Yes
Infrastructure	Yes
Ownership	100% state



back



IPZ ZEPCE

Location	Zepce
Geographical sector	Central B & H Region
Zone surface	11.5 ha
Access to road & railway	Yes
Infrastructure	Yes
Ownership	100% state





DRIVUSA	
Location	Zenica
Geographical sector	Central B & H Region
Zone surface	15 ha
Access to road & railway	Yes
Infrastructure	Yes
Ownership	100% private



DOLAC N / L

Location	Travnik
Geographical sector	Central B & H Region
Zone surface	14 ha
Access to road & railway	Yes
Infrastructure	Yes
Ownership	100% state





POCULICA-SLJIVCICA

Location	Vitez
Geographical sector	Central B & H Region
Zone surface	20 ha
Access to road & railway	Yes
Infrastructure	Yes
Ownership	100% state



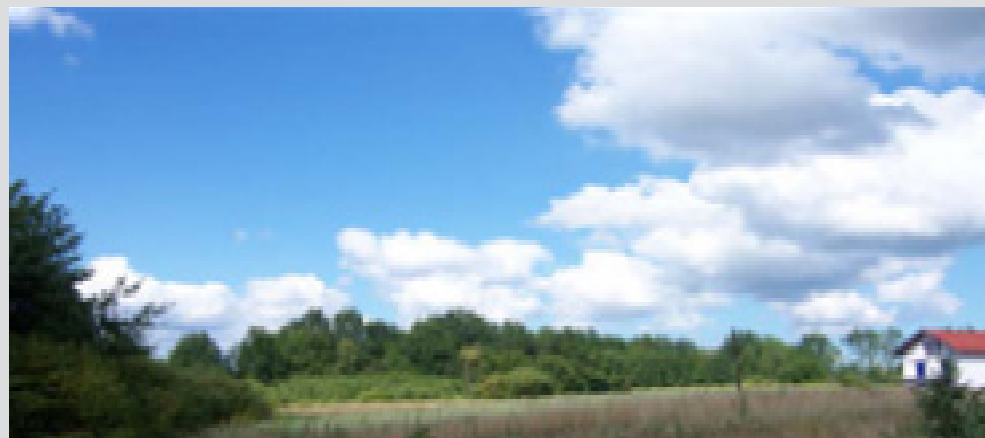


P - C 96	
Location	Vitez
Geographical sector	Central B & H Region
Zone surface	90 ha
Access to road & railway	Yes
Infrastructure	Yes
Ownership	50% private-50% state



SREDNJA OMANJSKA

Location	Usora
Geographical sector	Central B & H Region
Zone surface	5 ha
Access to road & railway	Yes
Infrastructure	Yes
Ownership	80% private - 20% state





TESANJAKA - ZABLJAK

Location	Usora
Geographical sector	Central B & H Region
Zone surface	5 ha
Access to road & railway	Yes
Infrastructure	Yes
Ownership	34% private - 66% state





BARE

Location	Kakanj
Geographical sector	Central B & H Region
Zone surface	8 ha
Access to road & railway	Yes
Infrastructure	Yes
Ownership	100% state



back



ČAKALOVAC

Location	Maglaj
Geographical sector	Central B & H Region
Zone surface	2 ha
Access to road & railway	Yes
Infrastructure	Yes
Ownership	100% private





JELOVAC-TUKOVI

Location	Maglaj
Geographical sector	Central B & H Region
Zone surface	2.5 ha
Access to road & railway	Yes
Infrastructure	Yes
Ownership	100% private





KOSOVA	
Location	Maglaj
Geographical sector	Central B & H Region
Zone surface	7 ha
Access to road & railway	Yes
Infrastructure	Yes
Ownership	100% private





MISURICI	
Location	Maglaj
Geographical sector	Central B & H Region
Zone surface	7 ha
Access to road & railway	Yes
Infrastructure	Yes
Ownership	70% private–30% state





MOSEVAC

Location	Maglaj
Geographical sector	Central B & H Region
Zone surface	6.5 ha
Access to road & railway	Yes
Infrastructure	Yes
Ownership	100% private





LJESNICA II	
Location	Maglaj
Geographical sector	Central B & H Region
Zone surface	8 ha
Access to road & railway	Yes
Infrastructure	Yes
Ownership	100% private



POLJICE

Location	Maglaj
Geographical sector	Central B & H Region
Zone surface	8 ha
Access to road & railway	Yes
Infrastructure	Yes
Ownership	100% private





HAN BILA

Location	Travnik
Geographical sector	Central B & H Region
Zone surface	7 ha
Access to road & railway	Yes
Infrastructure	Yes
Ownership	70% private–30% state





DONJA GOLUBINJA

Location	Zepce
Geographical sector	Central B & H Region
Zone surface	3 ha
Access to road & railway	Yes
Infrastructure	Yes
Ownership	100% private





BEGOV HAN	
Location	Zepce
Geographical sector	Central B & H Region
Zone surface	2.5 ha
Access to road & railway	Yes
Infrastructure	Yes
Ownership	100% private



LJESKOVICA	
Location	Zepce
Geographical sector	Central B & H Region
Zone surface	7 ha
Access to road & railway	Yes
Infrastructure	Yes
Ownership	100% private





VIOVLJE - VLASIC

Location	Travnik
Geographical sector	Central B & H Region
Zone surface	2 ha
Access to road & railway	Yes
Infrastructure	Yes - partly
Ownership	70% private – 30% state



back



ANTENA

Location	Zenica
Geographical sector	Central B & H Region
Zone surface	14 ha
Access to road & railway	Yes
Infrastructure	Yes
Ownership	55% private–45% state





SEBESIC TOURISM ZONE

Location	Novi Travnik
Geographical sector	Central B & H Region
Zone surface	4000 ha
Access to road & railway	Yes
Infrastructure	Yes
Ownership	10% private–90% state

